



ON THE DRAWING BOARD

NEW ELEMENTARY SCHOOL

This \$6.0 million dollar, new elementary school for the District School Board of Niagara is scheduled to go out for bidding to general contractors in March 2007. Located in Niagara Falls, off of Kalar Road, in the Deerfield Estates Subdivision. This 4,055 sm, two storey school will be comprised of 16 classrooms including labs, a day care centre, library and gymnasium.

JERICHO HOUSE

Jericho House Board of Directors have launched a campaign to build the Jericho Youth leadership, justice and spirituality centre. This ecumenical center based in the catholic tradition is located on 17.5 acres of beautiful wooded lot off of Hwy #3 in Wainfleet. The site has the unique benefit of providing a remote experience within a 20 minute drive from the heart of the Niagara Peninsula. The building is 16,500 square feet of floor area, with 28 bedrooms, lounges, meeting rooms, a chapel, full service kitchen, dinning room and staff offices. The project will incorporate aspects of sustainable design and is scheduled for completion fall 2008.

SHERKSTON SHORES

Phase one of a three phase project, entails the construction of a \$1.5 million dollar addition/ renovation, including a new themed restaurant, arcade and washrooms. Phase two will involve the construction of a new 10,000 square foot all purpose space for resort activities such as live entertainment. The third phase envisions the construction of an enclosed swimming pool water park feature and associated change rooms.

12 VUE MEDICAL OFFICES

Designed and inspired by the prairie style, and located in St. Catharines, this 14,000 square foot plaza will house a local dentist and cardiology clinic with room for other professional offices. Scheduled to begin construction in the summer of 2007.

UNDER CONSTRUCTION

IMMACULATE HEART OF MARY PARISH CHURCH

The new \$6.5 million catholic church located in Winona is nearing completion and scheduled for occupancy in June 2007. The Church was designed around the traditional gothic style, with arriscraft stone veneer features. The design, monastery in nature was inspired by the



the Niagara Escarpment's mountain ridge and forested hill-tops.

NIAGARA FALLS FIRE DEPARTMENT STATION #6

Replacing an existing station on the same site, and on the outskirts of Niagara Falls, this facility is scheduled to be opened in February of 2007.

The project was tendered on budget and constructed in 6 months.

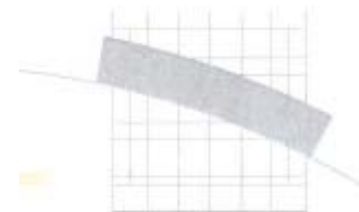


WOMEN'S PLACE

Work has now begun on this \$2.8 million renovation to the former Victoria School located in St. Catharines. It is to be converted into a 32 bedroom women's shelter with associated support facilities. Funded by an internal fund raising campaign and partnered with CMHC funding, this facility is long awaited and will meet the current shortage of accommodations for this organization and the local community.

PINE MANSIONS II

This four storey, 16 unit, 2 bedroom condominium development has just broken ground and uses new wall technology via the AMVIC, ICF wall system and Hambro floor system. Scheduled for completion Fall of 2007.



UNDER CONSTRUCTION CONT'D

FANTASY FUDGE

Located on Clifton Hill in Niagara Falls, and part of the HOCO Ltd. master plan. A local landmark, The Falls Tower Ride, was removed to make way for this highly themed candy retail store.

COUNTRY INN & SUITES



This newest 7 storey, 109 room hotel, located in Niagara Falls is approximately 50% complete and is scheduled for a May 2007 opening. It includes an indoor pool and all suites hotel rooms.

WE'VE MOVED

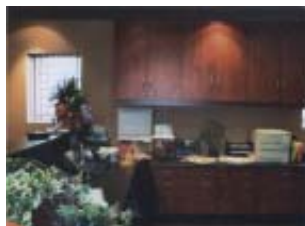
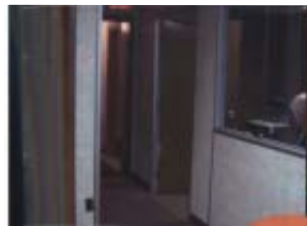
4687 QUEEN STREET, STUDIO 2

After two months.... Here are a few before and after pictures of our new office.

Before



After



OPEN HOUSE

Many thanks go out to our family, clients, staff, suppliers, and sub-contractors for their help and patience throughout our move and for attending our Open House Celebration on November 10, 2006. It was a wonderful time with great food, great friends and family!



Mayor Ted Salci presented Emilio with a Grand Re-Opening Plaque

AWARDS

Raimondo + Associates Architects Inc. in conjunction with Draftcon Calamar has recently received two awards for Tilt-Up Concrete design, The Ontario Concrete Speciality Product Concrete Award, held in Toronto, Ontario, and the American Tilt-Up Concrete Association Award held in Las Vegas.

HANA AMERICA "YOUNG GARDEN RESTAURANT"



Using concrete Tilt-Up wall technology, this newly completed commercial retail building consists of 10,000 square feet of floor area over two floors. The exterior facades and marker entry makes for a very dynamic and interesting architectural expression. It houses a new Japanese restaurant on the second floor.

